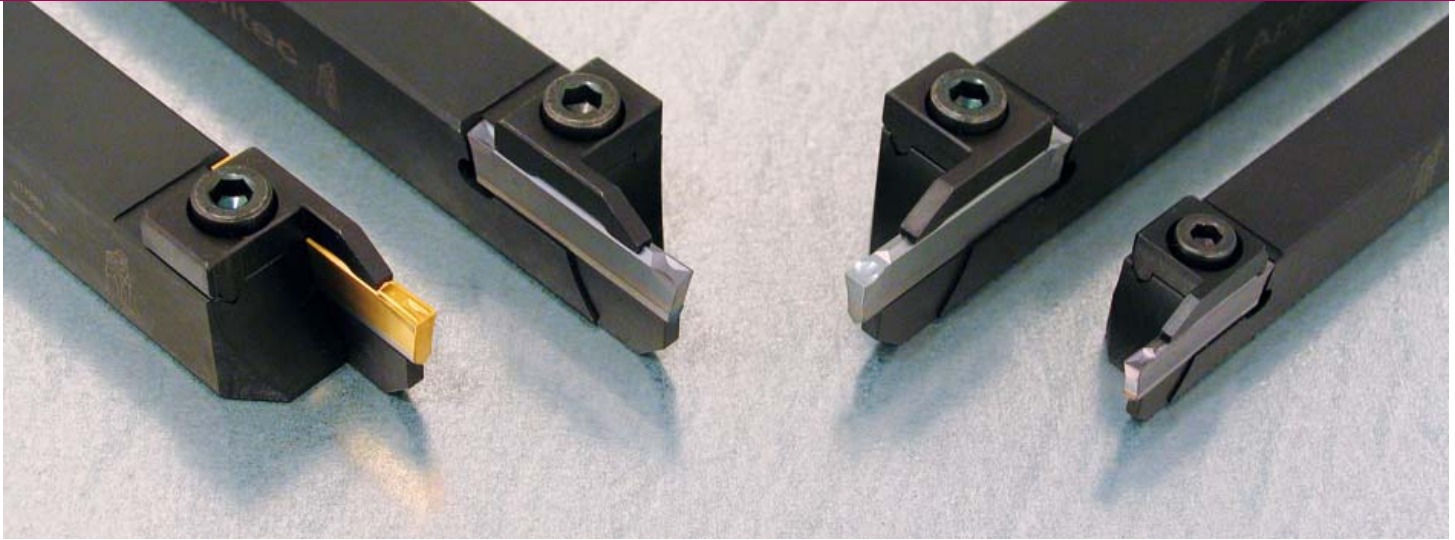


CUT-LINE

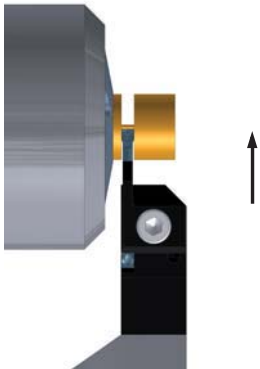


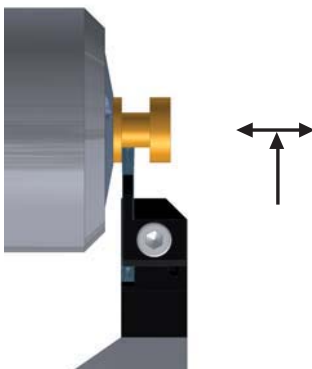
Répertoire Verzeichnis Index	Type	page Seite page	
Paramètres et nuances Schnittwerte und Sorten Data and grades	INFO & DATA	2 - 3	
	Ø max 34 mm	H	4
	Ø max 42 mm	HX	5
	special compact	HS	9
		UN	6
			UL UR
			P
		G	8

Nuances des plaquettes Wendeplatte-Sorten PVD thin coating

TiAlN revêtement PVD PVD Beschichtung PVD coating	Tmax revêtement PVD épais PVD Dickbeschichtung PVD thick coating	AS revêtement PVD PVD Beschichtung PVD coating
excellente nuance universelle très bonne résistance à la température 1er choix pour l'usinage finition des aciers, aciers inoxydables et alliages de titane	nuance pour usinage moyens à lourds des aciers et aciers alliés résiste aux températures d'usinage élevées 1er choix pour le tronçonnage des aciers au carbone et des aciers fortement alliés	nuance pour métaux non ferreux très faible coefficient de frottement 1er choix pour l'usinage des aluminiums jusqu'à 10 % Si, des cuivres et titanes faiblement alliés
beste Universal-Sorte sehr gute Warmfestigkeit bestens geeignet für die Bearbeitung von Stahl, rostfreiem Stahl und Titan Legierung	Sorte für mittlere bis hohe Belastung in Stahl und legiertem Stahl Bearbeitung hohe Bearbeitungs-Warmfestigkeit bestens geeignet für die Bearbeitung von legiertem Kohlenstahl und hoch legiertem Stahl	Sorte für Nichteisenmetalle sehr geringer Reibwert bestens geeignet für die Bearbeitung von Aluminium bis 10% Si, Kupfer und niedriglegiertem Titan
best universal grade very good heat resistance first choice for steel, stainless steel and titanium alloys machining	grade for medium to heavy machining of steel and alloyed steel high machining heat resistance first choice for the machining of carbon steel and high alloyed steel	grade for non-ferrous materials very low friction ratio first choice for Aluminium up to 10 % Si, Copper and low alloyed Titanium

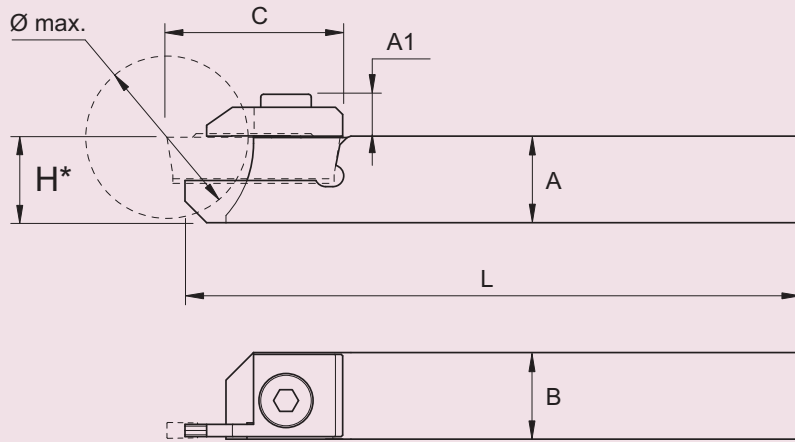
Paramètres de coupe indicatifs
Empfohlene Schittwerte
Standard machining data

Tronçonnage Abstechen Cut off	Matière Werkstoff Material	Vc (m/min)	Géométries de coupe Spanformgeometrien cutting geometries	
			Type U F (mm/U)	Type P F(mm/U)
	Acier de décolletage Automatenstahl Free-cutting steel	80 - 150	0.02 - 0.10	0.03 - 0.12
	Acier Stahl < 600 N/mm2 Steel	70 - 120	0.02 - 0.08	0.03 - 0.10
	Acier Stahl < 800 N/mm2 Steel	60 - 100	0.02 - 0.06	0.03 - 0.08
	Acier Stahl > 800 N/mm2 Steel	40 - 80	0.02 - 0.05	0.03 - 0.07
	Acier inoxydable Rostfreistahl Stainless steel	60 - 100	0.02 - 0.10	
	Aluminium	150 - 300	0.02 - 0.15	>12% Si 0.03 - 0.12
	Titane Titan Titanium	30 -60	0.02 - 0.08	
	Cuivre, laiton, bronze Kupfer, Messing, Bronze Copper, brass, bronze	100 -300	0.02 - 0.10	

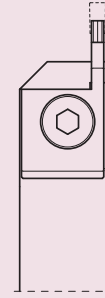
Tournage Drehen Turning	Matière Werkstoff Material	Vc (m/min)	Type G		
			CUT16 F (mm/U)	CUT22 F (mm/U)	CUT31 F (mm/U)
	Acier de décolletage Automatenstahl Free-cutting steel	100 - 200	0.02 - 0.08	0.03 - 0.12	0.04 - 0.15
	Acier Stahl < 600 N/mm2 Steel	80 - 160	0.02 - 0.06	0.03 - 0.10	0.04 - 0.12
	Acier Stahl < 800 N/mm2 Steel	60 - 120	0.02 - 0.05	0.03 - 0.08	0.04 - 0.10
	Acier Stahl > 800 N/mm2 Steel	50 - 100	0.02 - 0.04	0.03 - 0.07	0.04 - 0.08
	Acier inoxydable Rostfreistahl Stainless steel	60 - 120	0.02 - 0.06	0.03 - 0.08	0.04 - 0.10
	Aluminium	180 - 400	0.02 - 0.10	0.03 - 0.12	0.04 - 0.15
	Titane Titan Titanium	40 -70	0.02 - 0.06	0.03 - 0.08	0.04 - 0.10
	Cuivre, laiton, bronze Kupfer, Messing, Bronze Copper, brass, bronze	100 -400	0.02 - 0.08	0.03 - 0.10	0.04 - 0.12

Ø max 34

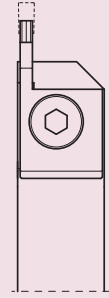
Porte-outils
Halter
Holders



L



R



Plaquette WSP Insert	A x B x L	Ø max.	A1	C	Art. N°	Art. N°
W 1.6 mm Type CUT16	10 x 10 x 115	16	6.2	19.5	CUT16-H1010L	CUT16-H1010R
	12 x 12 x 130	16	6.2	19.5	CUT16-H1212L	CUT16-H1212R
	12 x 12 x 90	16	6.2	19.5	CUT16-H1212L-90	CUT16-H1212R-90
	13 x 13 x 130	16	6.2	19.5	CUT16-H1313L	CUT16-H1313R
	16 x 16 x 130	16	6.2	19.5	CUT16-H1616L	CUT16-H1616R
	20 x 20 x 120	16	6.2	19.5	CUT16-H2020L	CUT16-H2020R
W 2.2 mm Type CUT22	10 x 12 x 115	20	6.4	24	CUT22-H1012L	CUT22-H1012R
	12 x 12 x 130	20	6.4	24	CUT22-H1212L	CUT22-H1212R
	12 x 12 x 90	20	6.4	24	CUT22-H1212L-90	CUT22-H1212R-90
	13 x 13 x 130	20	6.4	24	CUT22-H1313L	CUT22-H1313R
	16 x 16 x 130	20	6.4	24	CUT22-H1616L	CUT22-H1616R
	20 x 20 x 120	20	6.4	24	CUT22-H2020L	CUT22-H2020R
W 3.1 mm Type CUT31	16 x 16 x 120	34	7.8	35	CUT31-H1616L	CUT31-H1616R
	20 x 20 x 120	34	7.8	35	CUT31-H2020L	CUT31-H2020R
	25 x 25 x 140	34	7.8	35	CUT31-H2525L	CUT31-H2525R

da
ab
from
NOV. 2009!

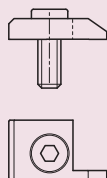
H* =

avec plaquette :
mit WSP :
with insert :

Type	H
U	H = A
P / G	H > A (0.2 - 0.5 mm)

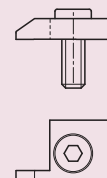
Pièces de rechange
Ersatzteile
Spare parts

L



Art. N°
CUT16L-SET
CUT22L-SET
CUT31L-SET

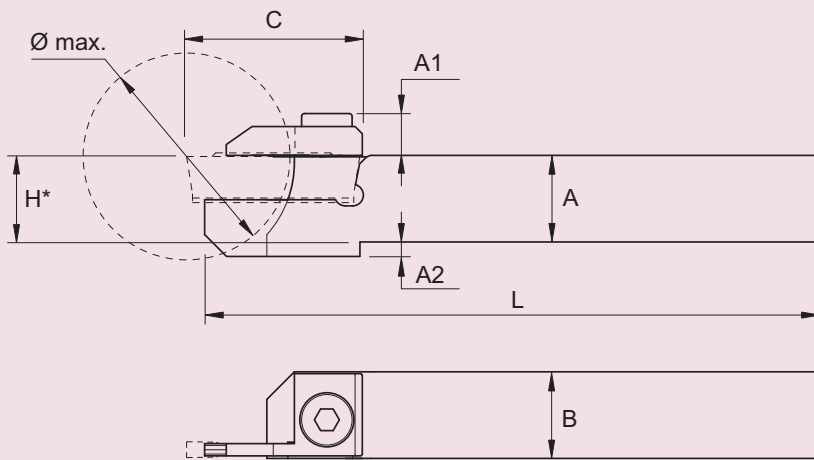
R



Art. N°
CUT16R-SET
CUT22R-SET
CUT31R-SET

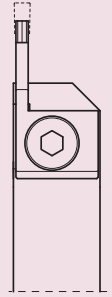
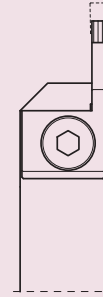
Ø max 42

Porte-outils
Halter
Holders



L

R



Plaquette WSP Insert	A x B x L	Ø max.	A1	C	A2	Art. N°	Art. N°
W 1.6 mm Type CUT16	12 x 12 x 130	20	6.2	21	-	CUT16-H1616LX	CUT16-H1616RX
	12 x 12 x 90	20	6.2	21	-	CUT16-H1212LX-90	CUT16-H1212RX-90
	13 x 13 x 130	20	6.2	21	-	CUT16-H1313LX	CUT16-H1313RX
	16 x 16 x 130	20	6.2	21	-	CUT16-H1616LX	CUT16-H1616RX
	20 x 20 x 120	20	6.2	21	-	CUT16-H2020LX	CUT16-H2020RX
W 2.2 mm Type CUT22	10 x 12 x 115	26	6.4	25	4	CUT22-H1012LX	CUT22-H1012RX
	12 x 12 x 130	26	6.4	25	2	CUT22-H1212LX	CUT22-H1212RX
	12 x 12 x 90	26	6.4	25	2	CUT22-H1212LX-90	CUT22-H1212RX-90
	13 x 13 x 130	26	6.4	25	-	CUT22-H1313LX	CUT22-H1313RX
	16 x 16 x 130	26	6.4	25	-	CUT22-H1616LX	CUT22-H1616RX
	20 x 20 x 120	26	6.4	25	-	CUT22-H2020LX	CUT22-H2020RX
W 3.1 mm Type CUT31	16 x 16 x 120	42	7.8	37	4	CUT31-H1616LX	CUT31-H1616RX
	20 x 20 x 120	42	7.8	37	-	CUT31-H2020LX	CUT31-H2020RX
	25 x 25 x 140	42	7.8	37	-	CUT31-H2525LX	CUT31-H2525RX

da
ab
from
NOV. 2009 !

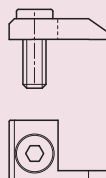
H* =

avec plaquette :
mit WSP :
with insert :

Type	H
U	H = A
P / G	H > A (0.2 - 0.5 mm)

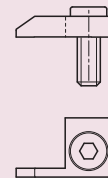
Pièces de rechange
Ersatzteile
Spare parts

L



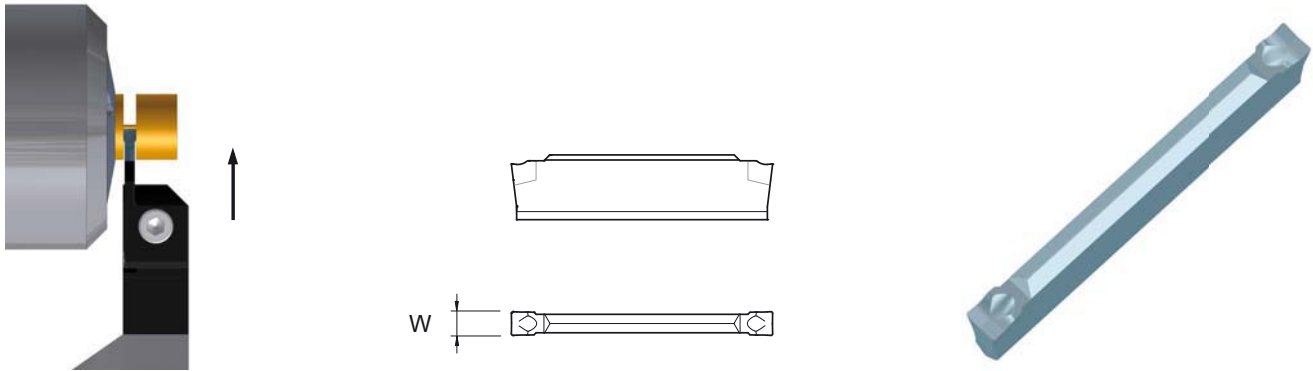
Art. N°
CUT16LX-SET
CUT22LX-SET
CUT31LX-SET

R

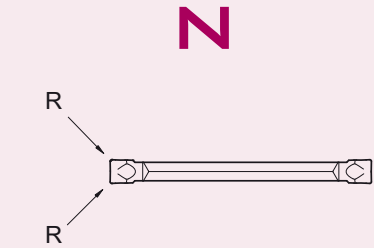


Art. N°
CUT16RX-SET
CUT22RX-SET
CUT31RX-SET

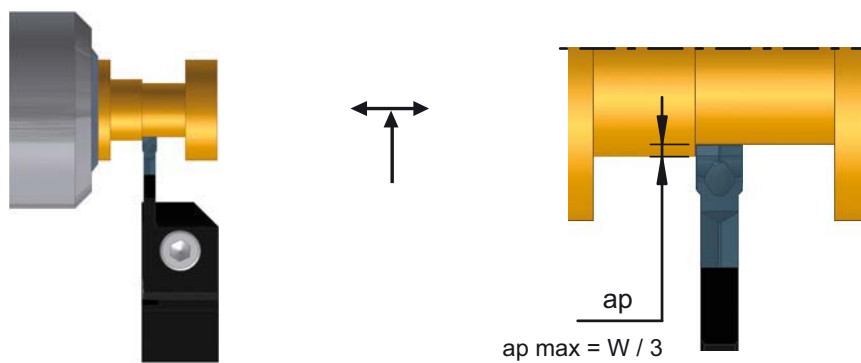
Plaquettes en métal dur
VHM-Wendepplatten
Solid carbide inserts



Type	W +/-0.05	A	R	Art. N°	TiALN Tmax AS
CUT16	1.6	-	0.02	CUT16-UN-000	■ ■ ■
	1.6	-	0.10	CUT16-UN-001	■ ■ ■
CUT22	2.2	-	0.02	CUT22-UN-000	■ ■ ■
	2.2	-	0.20	CUT22-UN-002	■ ■ ■
CUT31	3.1	-	0.02	CUT31-UN-000	■ ■ ■
	3.1	-	0.20	CUT31-UN-002	■ ■ ■

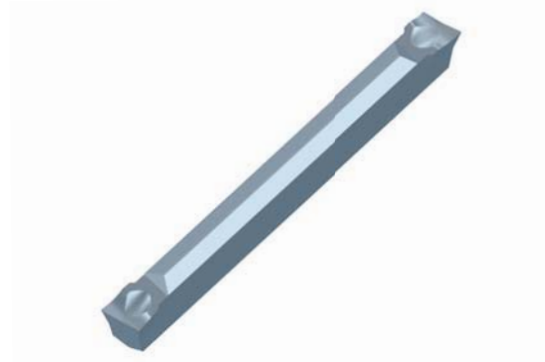
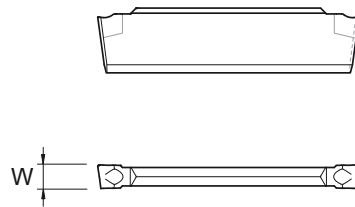
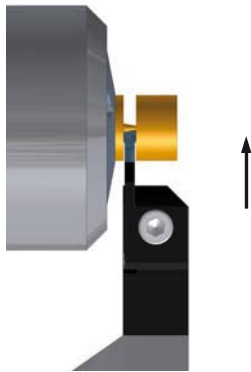


da / ab / from NOV. 2009 !



■ = Standard
□ = Sur demande / Auf Anfrage / On request

Plaquettes en métal dur
VHM-Wendepplatten
Solid carbide inserts

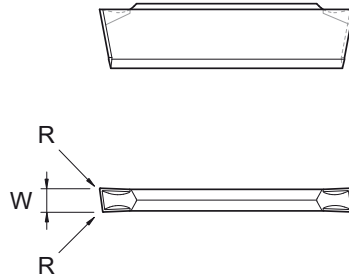
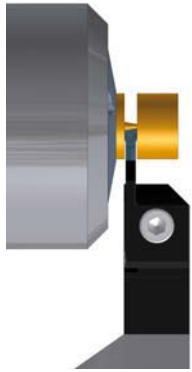


Type	W +/-0.05	A	R	L		R		TiALN	Tmax	AS	
				Art. N°	Art. N°						
CUT16	1.6	8°	0.02			CUT16-UL-800	CUT16-UR-800	■	■	■	
	1.6	15°	0.02			CUT16-UL-1500	CUT16-UR-1500	■	■	■	■
CUT22	2.2	8°	0.02			CUT22-UL-800	CUT22-UR-800	■	■	■	
	2.2	8°	0.20			CUT22-UL-802	CUT22-UR-802	■	■	■	■
	2.2	15°	0.02			CUT22-UL-1500	CUT22-UR-1500	■	■	■	■
CUT31	3.1	8°	0.02			CUT31-UL-800	CUT31-UR-800	■	■	■	
	3.1	8°	0.20			CUT31-UL-802	CUT31-UR-802	■	■	■	■
	3.1	15°	0.02			CUT31-UL-1500	CUT31-UR-1500	■	■	■	■

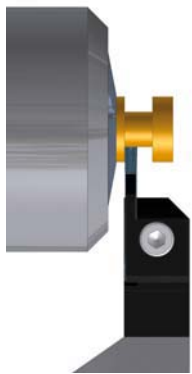
da / ab / from NOV. 2009 !

■ = Standard
□ = Sur demande / Auf Anfrage / On request

Plaquettes en métal dur
VHM-Wendepplatten
Solid carbide inserts



Type	W +/-0.05	A	R	L		R		TiAlN Tmax AS
				Art. N°	Art. N°	TiAlN	Tmax	
CUT16	1.6	8°	0.10	CUT16-PL-801	CUT16-PR-801	■	■	□
CUT22	2.2	8°	0.15	CUT22-PL-802	CUT22-PR-802	■	■	□
CUT31	3.1	8°	0.15	CUT31-PL-802	CUT31-PR-802	■	■	□

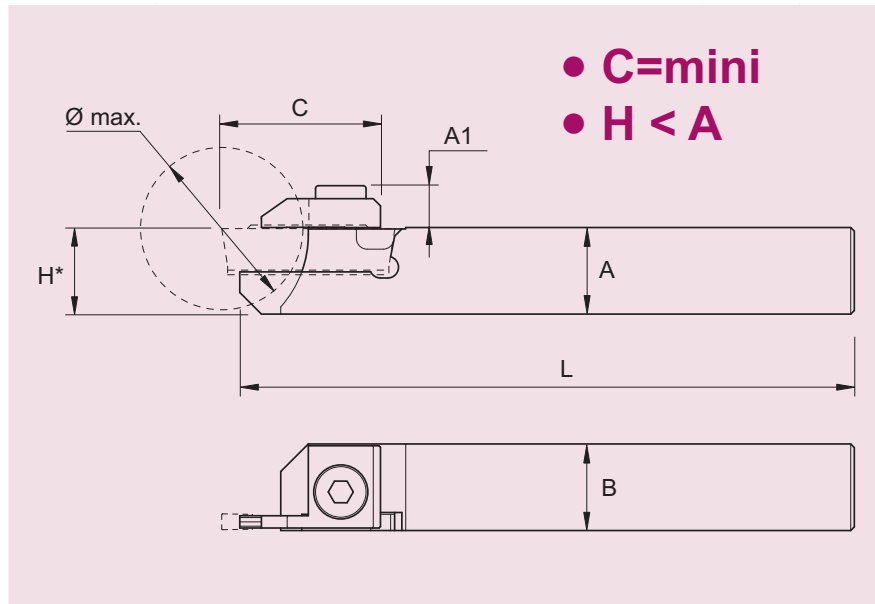


Type	W +/-0.05	T	R	N		TiAlN Tmax AS	
				Art. N°	TiAlN		Tmax
CUT16	1.6	2.5	0.10	CUT16-GN-001	■	■	
CUT22	2.2	3.5	0.15	CUT22-GN-002	■	■	■
CUT31	3.1	5	0.15	CUT31-GN-002	■	■	■

■ = Standard
□ = Sur demande / Auf Anfrage / On request

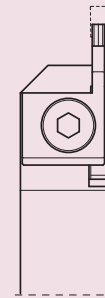
special compact

Porte-outils
Halter
Holders

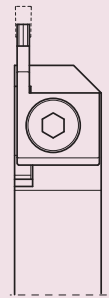


- C=mini
- H < A

L



R



Plaquette WSP Insert	A x B x L	Ø max.	A1	C	Art. N°	Art. N°
W 1.6 mm Type CUT16	10 x 10 x 115	13	5.5	17.5	CUT16-H1010LS	CUT16-H1010RS
	12 x 12 x 130	13	5.5	17.5	CUT16-H1212LS	CUT16-H1212RS
	12 x 12 x 90	13	5.5	17.5	CUT16-H1212LS-90	CUT16-H1212RS-90
	13 x 13 x 130	13	5.5	17.5	CUT16-H1313LS	CUT16-H1313RS
	16 x 16 x 130	13	5.5	17.5	CUT16-H1616LS	CUT16-H1616RS
	20 x 20 x 120	13	5.5	17.5	CUT16-H2020LS	CUT16-H2020RS
W 2.2 mm Type CUT22	10 x 12 x 115	20	5.8	22	CUT22-H1012LS	CUT22-H1012RS
	12 x 12 x 130	20	5.8	22	CUT22-H1212LS	CUT22-H1212RS
	12 x 12 x 90	20	5.8	22	CUT22-H1212LS-90	CUT22-H1212RS-90
	13 x 13 x 130	20	5.8	22	CUT22-H1313LS	CUT22-H1313RS
	16 x 16 x 130	20	5.8	22	CUT22-H1616LS	CUT22-H1616RS
	20 x 20 x 120	20	5.8	22	CUT22-H2020LS	CUT22-H2020RS
W 3.1 mm Type CUT31	16 x 16 x 120	34	7.2	30	CUT31-H1616LS	CUT31-H1616RS
	20 x 20 x 120	34	7.2	30	CUT31-H2020LS	CUT31-H2020RS
	25 x 25 x 140	34	7.2	30	CUT31-H2525LS	CUT31-H2525RS

*

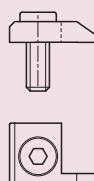
H < A

0.2 - 0.7 mm,

selon type de plaquette
je nach WSP Typ
depending on insert type

Pièces de rechange
Ersatzteile
Spare parts

L



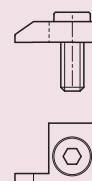
Art. N°

CUT16LS-SET

CUT22LS-SET

CUT31LS-SET

R

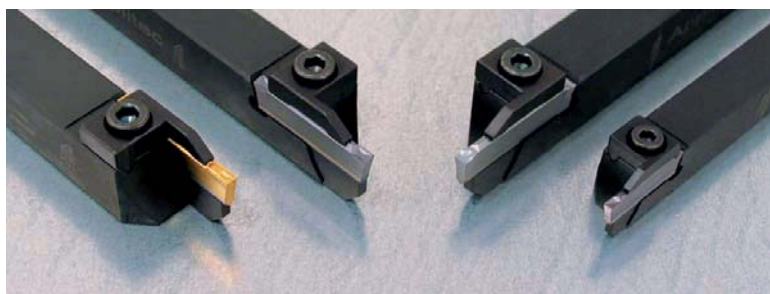
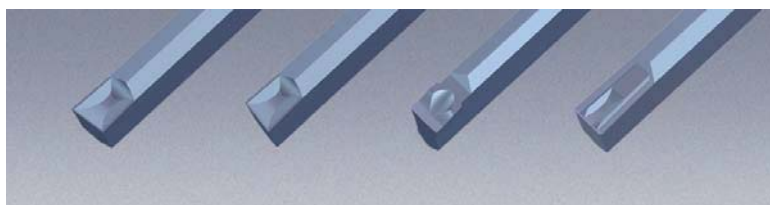


Art. N°

CUT16RS-SET

CUT22RS-SET

CUT31RS-SET



DAL LAGO TTC S.R.L.
Trade Tools Company

DAL LAGO TTC S.R.L. - Via Piave, 16 - 36077 Altavilla Vic.na (VI) - Italy
Tel +39 0444 349030 - Fax +39 0444 348964 - www.dallago.it - info@dallago.it

APPLITEC MOUTIER SA
CH. NICOLAS-JUNKER 2
2740 MOUTIER